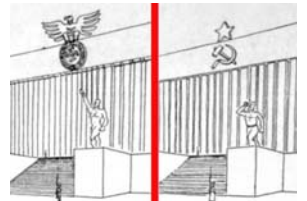


WAR & MODERNITY (+ Midterm)

Destruction of WWII - 1939-1945
Shift of Power & Influence in mod.arch from Europe to USA
Ambiguity of classicism, technology, etc.

NAZI TECHNOLOGICAL MODERNITY

- Luftwaffe (=Airforce) Ministry, E.Sagebiel, Berlin, 1935-36
- Tempelhof Airport, E. Sagebiel, Berlin, 1936-41
- German Luftwaffe (Airforce) Testing Buildings
- Autobahn (highway system) and the VW Bug (People's Car)
- Ernst Neufert's "standards" & House-Building machines
- The "Atlantic Wall", bunkers
- Concentration Camps



AMERICA AT WAR

- Federal Triangle, Washington, DC, 1938-45
- Pentagon, by Berman, Washington, DC, 1941-3
- Economic Depression, 1929-39
- The Military Industrial Complex
 - Mendelsohn, "German Village" in Utah desert, 1942
 - Albert Kahn: "the Producer of Production Lines"
- * Willow Run B-24 Bomber Plant (Ford; then Kaiser Autos, now GM), Detroit, Albert Kahn, 1941
- Wartime housing by modern architects
- * Aluminum Terrace, Gropius, Natrona Heights, PA, 1941



MIDTERM EXAM REVIEW / ADVICE

- READ more, do the optional reading reports, for Extra Credit and proof you read
- KNOW the authors and arguments or "his-stories"; MENTION them in exam
- Think about WHY? IDEAS matter more than form or what you see
- Don't just describe (buildings), ANALYZE the ideas (behind them).
- Be CRITICAL, understand the arguments for and against,
- COMPARE and CONTRAST, weave both for and against ideas
- STUDY a little bit every week, use Final Exam study guide NOW
- Study both ID section, and ESSAYS, develop answers over 6 weeks
- WRITE: Take more notes, write summaries of each lecture, create flash cards, use the reading reports to think...
- MANAGE your time! Establish priorities! Daily, weekly, semester...
- Balance of courses? 9 units = 9 hours/week norm?
- Study together, discuss in groups. Ask for help!

